

FOR LEASE

Owned and Operated by  **LINK**

1502 N. 25TH AVE. | SUITE C

1502 N. 25th Ave., Melrose Park, IL

±52,319 SF



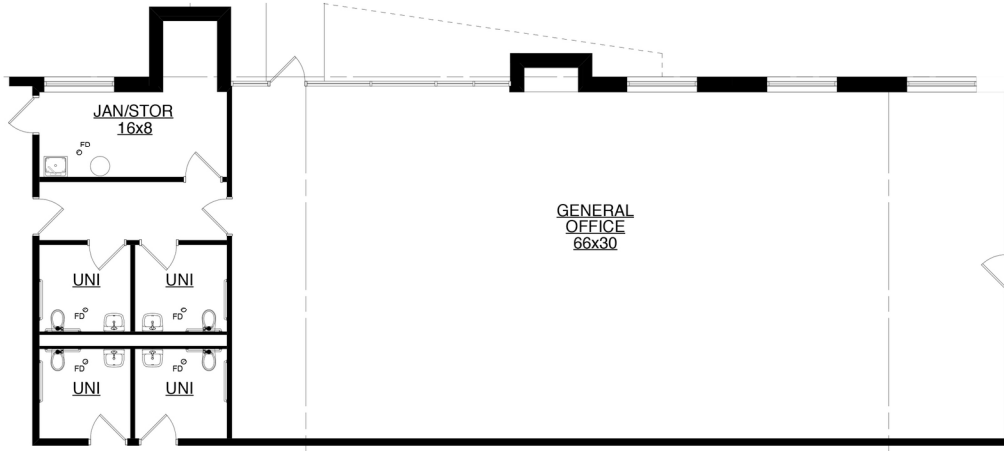
**LEASING INFO
& CONTACT**

Sam Durkin Managing Director (773) 343-4361 / sam.durkin@jll.com

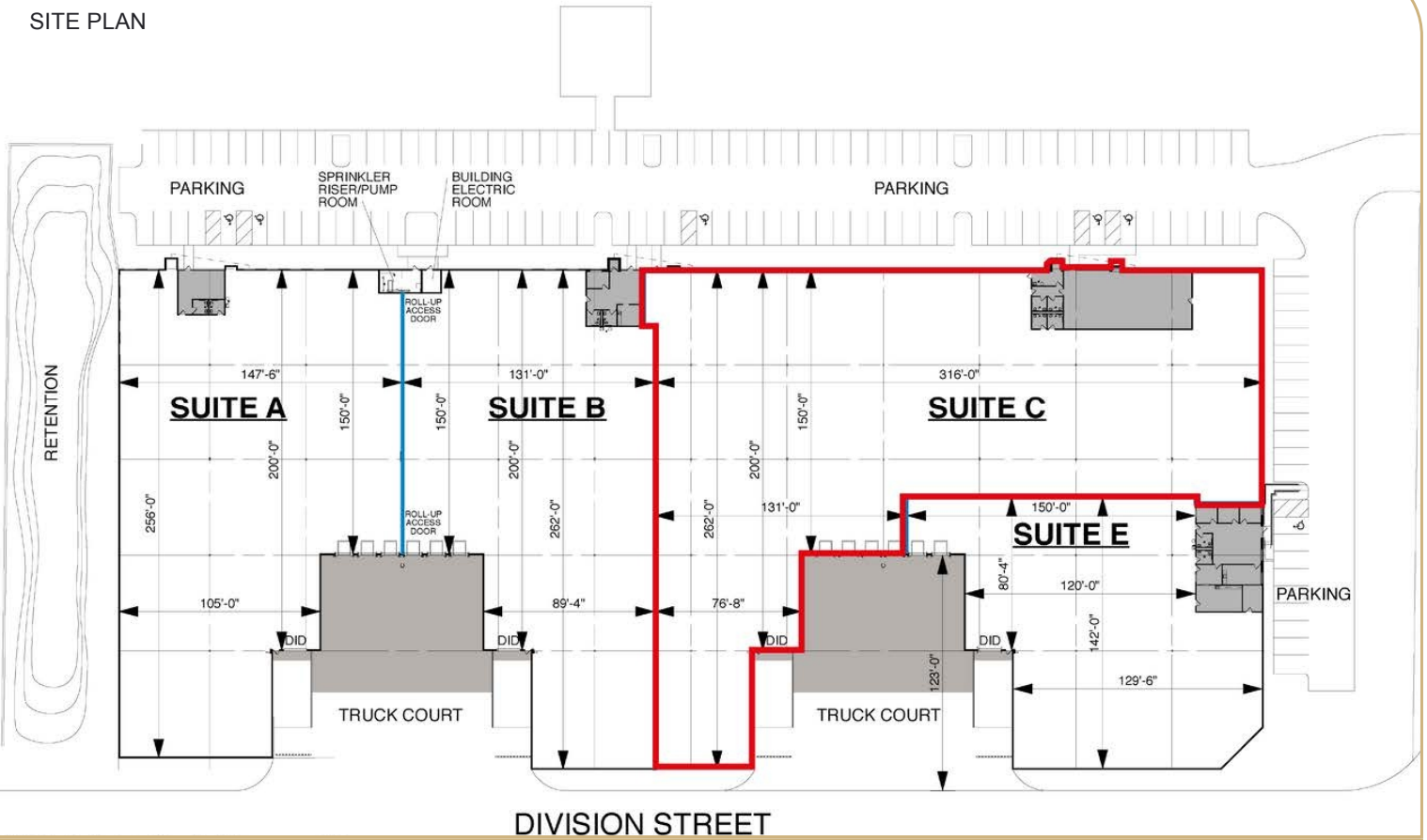


This is not an offer or acceptance of an offer to lease space. A lease will only be offered or made in a written agreement signed by landlord. No representation or warranty of any kind is made by landlord unless set forth in a written definitive lease executed by the landlord.

SUITE C | OFFICE



SITE PLAN



SUITE C DETAILS AND HIGHLIGHTS

Suite C Size	52,319 SF	Clear Height	28'
Warehouse Size	49,649 SF	Column Spacing	50' x 50'
Office Size	2,670 SF	Parking	+/- 50 car stalls
Loading Docks	4 exterior docks	Sprinkler	ESFR
Drive-in Doors	1 drive-in door		



LOCATION HIGHLIGHTS

I-290/I-294 via North Ave	3 miles
O'Hare International Airport	7 miles
Downtown Chicago	14 miles
Midway International Airport	15 miles

